



Middlebury Church of the Brethren May 5, 2019

MIDDLEBURY CHURCH OF THE BRETHREN "PROMISE"

We promise to walk in the way of Jesus' love by: Looking for the God seed in all people while practicing healthy processes of inclusiveness, showing grace and honesty.

- Building-up community by showing Hospitality, Equality and speaking truth in love.
- Willing to be open to the leading of the Holy Spirit with our heart, mind, soul, and strength as we grow spiritually and are transformed in God's love, grace and peace.
- Study, Practice, and Commitment to Forbearance* as we search for common ground.
- Joyously Celebrating Life.

*Forbearance:

Forbearance is a Biblical concept.

The Greek words in the New Testament translated as carry meanings of patience self-control, restraint, mercy, long-suffering and the refusal to threaten (EPH. 4:2; COL 3:13, EPH 6:9, 11COR 12:6)

Forbearance does not jeopardize or denigrate individual conviction, but it does place boundaries on the quality and character of individual responses.

Forbearance does not require one to accept what another believes, but it does require one listen and try to understand what another believes without demeaning, personal attacks, or acting to disenfranchise the other person.

GROUP GATHERINGS after Fellowship

Children under 9 yrs meet in classrooms west of kitchen / Keri Anderson, Jill Weaver,
Sharon Lemmon, Beth Muhnicketl

Children 10 yrs and older meet in Room 401 / Mark & Catherine Roebuck

Adult Group Gathering

Book study.....Room #105 with Dana Snider

Contemplative & Silent Meditation-Rear of Sanctuary.....Self directed

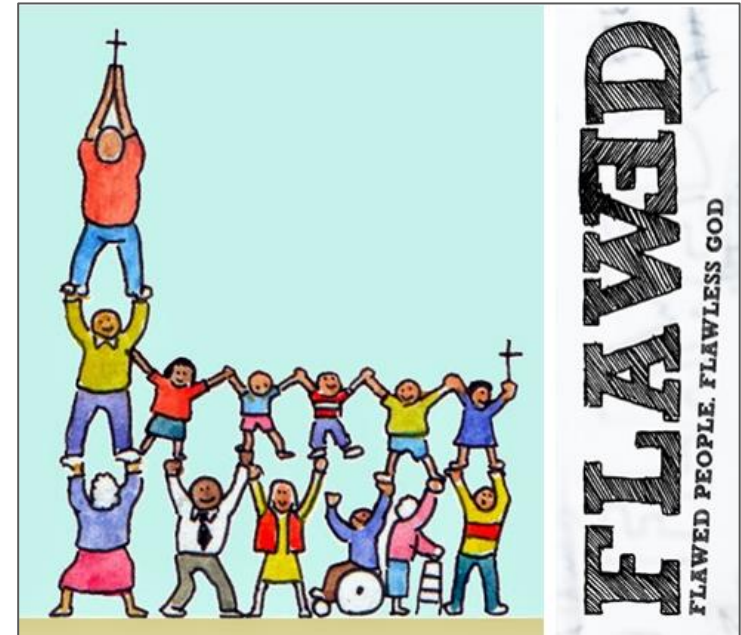
MIDDLEBURY CHURCH OF THE BRETHREN

Middlebury Church of the Brethren is a welcoming and inclusive congregation offering Christ's hospitality to the world.

Pastoral Minister – Janet Shaver; cell 574-214-6741
e-mail: middleburypastor@yahoo.com
Worship – 9:30 a.m. Sunday School – 10:20 a.m.



We have a Children's Play area set up in the sanctuary for parents with young children. We understand and accept that it isn't easy for young children to sit still throughout the service. The play area is along the back wall to your left as you enter the sanctuary. We ask that the parents sit close to the play area since this isn't supervised by anyone. God Bless the Children.



WONG AND REDEMPTION

May 5, 2019

Welcome and Announcements Mark Roebuck

Opening Prayer Mark Roebuck

Prelude Sherry Bickel

*Praise music Som'landela (We will follow) Insert/screen

*Call to Worship – Responsive

Leader: Living Creator, the world teems with your beauty and abounds with your artistry and grace.

People: We sing your praises, Lord, as we celebrate the risen Christ.

Leader: Celebrate the risen Christ who walks with us as we traverse the joys and fears of our lives.

People: We sing your praises, Lord, as we celebrate the risen Christ.

*Hymn *Blessed Assurance* #332

Sharing of Joys and Concerns

You are invited to leave your church offering on the table as you leave the worship space.

Offering Prayer – WL

Gracious God, your gifts to us are boundless: life and liberties, vibrant color and melodious sounds, forgiveness and your divine presence, intelligence and creativity, work and worship, love and compassion. There is no end to your goodness and generosity toward us, and we thank you. We offer these gifts in response to all you have shared with us, for we always and only give you what is already yours. Amen.

Hymn *O Worship the Lord* #124

Scripture John 21:1-19 NT pg #115

Message: **TRONG AND REDEMPTION** Pastor Tim Morpew

*Hymn *Go, My Children* #433

*Benediction – WL

God, you know our hearts. You know how much we love you. You know that it's easy to proclaim our love gathered together here in your house, but when we leave this place we need your loving guidance that much more. Grant us your love and grace till we're gathered back together again. Amen.

*Postlude

*Congregation stands in body or spirit

New or Visiting.....WELCOME.....Please fill out Guest cards located in the pews and place in the offering plate when finished.

+++++

May 5, 2019 Activities/ Announcement

9:30 am – Worship – Pastor Tim Morphew

Worship Leader – Catherine Roebuck

10:20 am – Fellowship time – Birthday Sunday

10:45 am – Sunday school Classes –

Classes are listed on back of bulletin

2-4 pm – Pentecostal Church rents sanctuary

Tuesday 7pm – Board Rm rented

Tuesday, May 7th 2-4pm – Women in Community at Bev Short's home

Thursday, May 9th 7pm – Board Meeting

Dalis is out of the office From May 4th through May 11th.

CORRECTION! The “Women in Community” group will meet on May 14th (always the 2nd Tuesday) instead of May 7th at Bev Short's house



“Take a Break Thursday” free community meal at 5:30 pm. Please come and enjoy the meal & fellowship. This is a partnership with Faith Mission of Elkhart.

With health issues among us, vacations and travel, volunteers are badly needed to help with the Thursday meal. Please come at 4:30 if you can help with setup, serving and clean up.

WITNESS-TO-HOST-CITY GIFTS GO IN BOX AT BACK OF SANCTUARY. SEE LIST FOR NEEDED ITEMS.



To my McoB Friends:

Thank you all for the many lovely cards for my 92nd birthday!
Each and every one was greatly appreciated.

Mabel Nisley

May 12, 2019 Activities/ Announcements

9:30 am – Worship – Carrie Eikler from Goshen City

Worship Leader – Mark Roebuck

10:20 am – Fellowship time

10:45 am – Sunday school Classes –

Classes are listed on back of bulletin

2-4 pm – Pentecostal Church rents sanctuary

Tuesday 7pm – Board Rm rented



May 19th speaker will be Carol Pfeiffer (from Columbia City)

FROM THE WORSHIP COMMITTEE –

If you would like to let friends in our congregation know you are traveling or will be out of town, there is a calendar for you to share that information at the back of the Fellowship Hall beside the door.

Please be assured that the calendar will be in the office during any event with outside people; ie: during the community meal.



FOOD PANTRY Donations are always needed - especially hygiene products and household cleaning products. PLEASE PLACE THE ITEMS IN THE PLASTIC BIN AT THE BACK OF THE SANCTUARY.

Pastor Janet cards & visits go to
304 Mack Dr.
Nappanee, IN 46550

★ Please call before stopping in